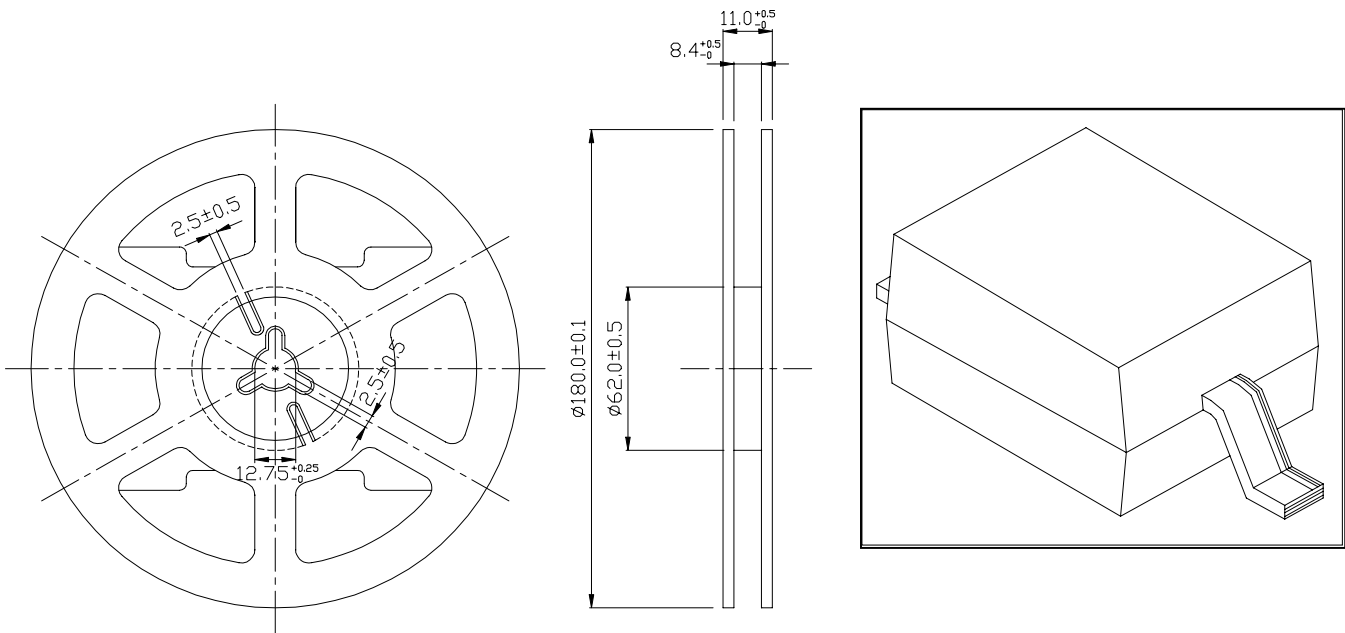




## 1.3 mm Height Subminiature , Axial Flat Top LEDs

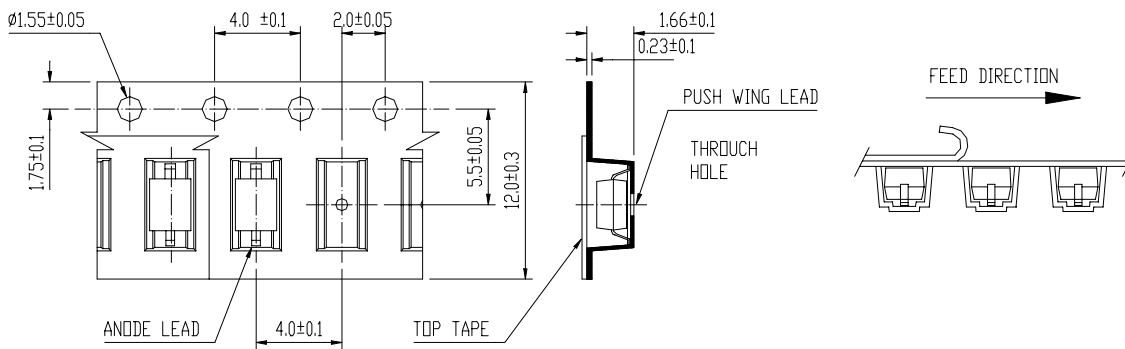
MODEL NO : 28-21VRC/TR8

### ■ Package Dimensions



Luminous intensity	Iv	1.5	3.5	----	mcd
--------------------	----	-----	-----	------	-----

### ■ Loaded Quantity Per Reel 2000 Pcs/Reel



1. All dimensions are in millimeters.
2. Lead spacing is measured where the lead emerge from the package
3. Protruded resin under flange 1.5 mm (0.59") max.



# EVERLIGHT ELECTRONICS CO.,LTD.

DEVICE NUMBER : DLE-282-033 REV : 1.1  
 ECN : \_\_\_\_\_ PAGE : 3/5

## 1.3 mm Height Subminiature , Axial Flat Top LEDs

MODEL NO : 28-21VRC/TR8

### ■ Absolute Maximum Ratings at Ta = 25°C

Parameter	Symbol	Rating	Unit
Reverse Voltage	V <sub>r</sub>	5	V
Forward Current	I <sub>f</sub>	30	mA
Operating Temperature	T <sub>opr</sub>	-40 ~ +85	°C
Storage Temperature	T <sub>stg</sub>	-40 ~ +100	°C
Soldering Temperature	T <sub>sol</sub>	260 ± 5 for 5 sec	°C
Power Dissipation	P <sub>d</sub>	100	mW
Peak Forward Current(Duty 1/10 @ 1KHZ)	I <sub>f</sub> (Peak)	160	mA

### ■ Electronic Optical Characteristics :

Parameter	Symbol	MIN.	TYP.	MAX.	Unit	Condition
Luminous intensity	I <sub>v</sub>	1.5	3.5	----	mcd	I <sub>f</sub> = 20 mA
Viewing Angle	2θ 1/2	----	150	----	deg	
Peak Wavelength	λ <sub>p</sub>	----	640	----	nm	
Dominant Wavelength	λ <sub>d</sub>	----	625	----	nm	
Spectrum Radiation Bandwidth	△λ	----	45	----	nm	
Forward Voltage	V <sub>f</sub>	1.7	2.0	2.4	V	
Reverse Current	I <sub>r</sub>	----	----	10	μA	V <sub>r</sub> =5V





# EVERLIGHT ELECTRONICS CO.,LTD.

DEVICE NUMBER : DLE-282-033 REV : 1.1  
 ECN : \_\_\_\_\_ PAGE : 4/

## 1.3 mm Height Subminiature , Axial Flat Top LEDs

MODEL NO : 28-21VRC/TR8

### ■ Reliability Test Items And Conditions

NO.	Item	Test Conditions	Test Hours/ Cycle	Sample Size	Ac/Re
1	Solder Heat	TEMP : 260°C ± 5 °C	5 SEC	76 PCS	0/1
2	Temperature Cycle	H : +85°C 30 min  5 min L : -55°C 30 min	50 CYCLE	76 PCS	0/1
3	Thermal Shock	H : +100°C 5 min  10 sec L : -10°C 30 min	50 CYCLE	76 PCS	0/1
4	High Temperature Storage	TEMP. : +100°C	1000 HRS	76 PCS	0/1
5	Low Temperature Storage	TEMP. : -55°C	1000 HRS	76 PCS	0/1
6	DC Operating Life	If = 20 mA	1000 HRS	76 PCS	0/1
Luminous intensity		Iv	1.5      3.5	----	mcd



1.3 mm Height Subminiature , Axial Flat Top LEDs

MODEL NO : 28-21VRC/TR8

■ Typical Electro-Optical Characteristic Curves

