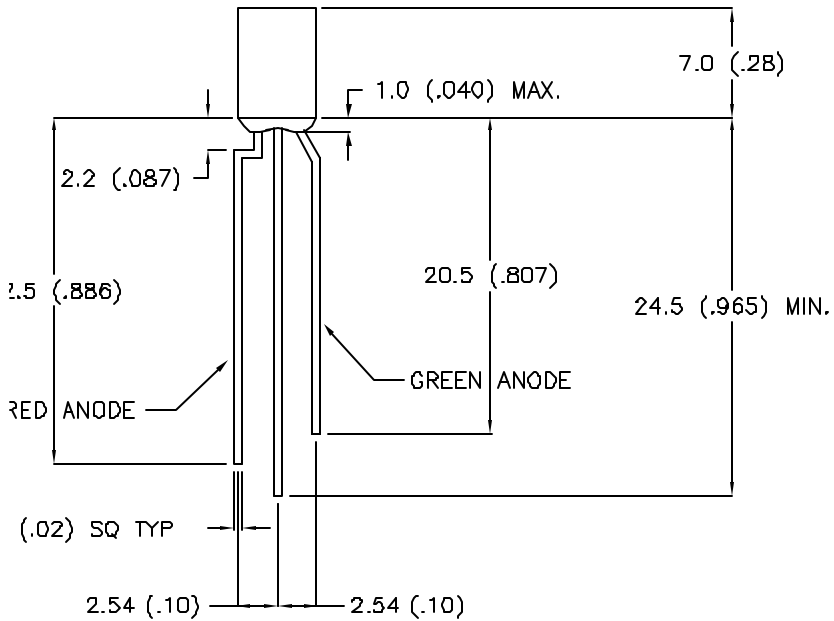
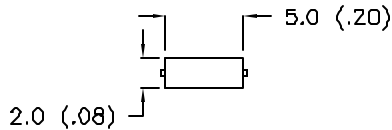


REVISIONS	REV
UPDATED SPECS., ADDED LEADS IN TOP VIEW./	A

DRAWING NUMBER	REV
SSL-LX2579IGW	A

ELECTRO-OPTICAL CHARACTERISTICS $T_A=25\text{ }^\circ\text{C}$ $I_f=20\text{mA}$

PARAMETER	MIN	TYP	MAX	UNITS	TEST COND
PEAK WAVELENGTH		635 (RED)		nm	
		565 (GREEN)		nm	
FORWARD VOLTAGE (R/G)		2.1	2.8	V_f	
REVERSE VOLTAGE (R/G)		5.0		mcd	$I_f=100\mu\text{A}$
AXIAL INTENSITY (R/G)		14/8		mcd	$I_f=20\text{mA}$
VIEWING ANGLE		110		2x theta	
EMITTED COLOR : RED/GREEN					
EPOXY LENS FINISH: MILKY WHITE DIFFUSED					



Ⓐ LIMITS OF SAFE OPERATION AT 25 °C

PARAMETER	MAX	UNITS
PEAK FORWARD CURRENT (R/G)*150/150		mA
AVG FORWARD CURRENT (R/G)	30/25	mA
POWER DISSIPATION (R/G)	105/105	mW
DERATE FROM 25 °C	-1.2	mW/ °C
OPERATING/STORAGE TEMP	-40 TO +85	°C
LEAD SOLDERING TEMP.	+260	°C
2.0mm FROM BODY		3 SEC. MAX

* $t < 10\mu\text{s}$

RELIABILITY NOTE:
 ANY YEARS OF EXPERIENCE DATA ACCUMULATION INDICATE SOLDER HEAT IS A MAJOR CAUSE OF EARLY AND SOLDER FAILURE. PLEASE PAY ATTENTION TO YOUR SOLDERING TECHNIQUES.

LX2579AC

LUMEX OPTO COMPONENTS INC.		292 E. HELLEN ROAD PALATINE, ILLINOIS 60067 (708) 359-2790	
DATE: 11-10-92	APPROVED BY:	DRAWN BY:	
SCALE: N/A			
2 X 5 mm RECTANGULAR LED, BICOLOR RED/GREEN			
PAGE 1 OF 1	DRAWING NUMBER SSL-LX2579IGW		REV A