



PARA LIGHT ELECTRONICS CO., LTD.

4F, No.1, Lane 93, Chien Yi Road, Chung Ho City, Taipei, Taiwan, R.O.C.

Tel: 886-2-2225-3733

Fax: 886-2-2225-4800

E-mail: para@para.com.tw

<http://www.para.com.tw>

DATA SHEET

PART NO. : L-5T8R4G5B5W-CA

REV : A / 0

CUSTOMER'S APPROVAL : _____

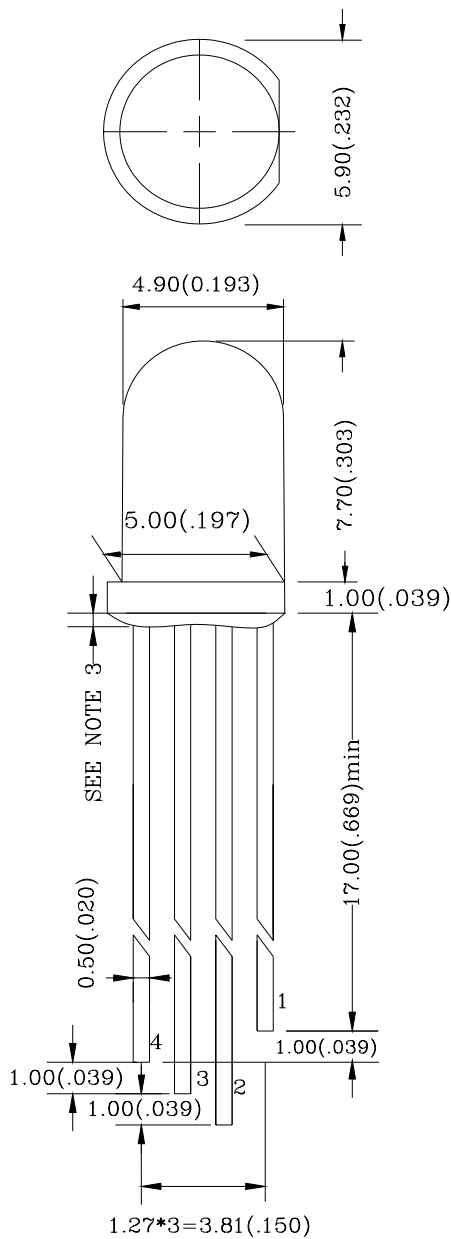
DCC : _____

DRAWING NO. : DS-35-04-0327

DATE : 2004-05-27

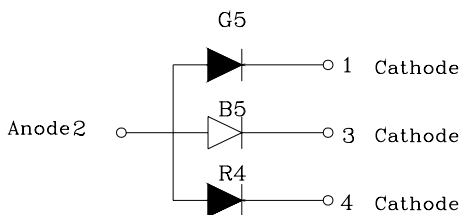
Page : 1

PACKAGE DIMENSIONS



Note:

- 1.All Dimensions are in millimeters.
- 2.Tolerance is $\pm 0.25\text{mm}(0.010\text{ ''})$ Unless otherwise specified.
- 3.Protruded resin under flange is 1.5mm(0.059 ") max.
- 4.Lead spacing is measured where the leads emerge from the package.
- 5.Specification are subject to change without notice
- 6.highlight <-500V the led can withstand the max static level when assembling or operation.



FEATURES

- * 5.0 mm DIA LED LAMP
- * LOW POWER CONSUMPTION.
- * I.C. COMPATIBLE.
- * THREE CHIPS ARE MATCHED FOR UNIFORM LIGHT OUTPUT.
- * LONG LIFE-SOLIDSTATE RELIABILITY.
- * FULL COLOR AND HIGH CONTRAST LAMP

CHIP MATERIALS

- * Dice Material : AlGaAs/GaAs & GaInN/GaN & GaInN/GaN
- * Light Color : FULL COLOR(ULTRA RED & ULTRA PURE GREEN & ULTRA BLUE)
- * Lens Color : WHITE DIFFUSED

ABSOLUTE MAXIMUM RATING:(Ta=25°C)

| SYMBOL | DESCRIPTION | ULTRA RED | ULTRA PURE GREEN | ULTRA BLUE | UNIT |
|--|--------------------------------------|---------------|------------------|------------|-------|
| PAD | Power Dissipation | 70 | 120 | 120 | mW |
| VR | Reverse Voltage | 5 | 5 | 5 | V |
| IF | Average Forward Current | 30 | 30 | 30 | mA |
| IPF | Peak Forward Current (Duty=0.1,1KHZ) | 60 | 120 | 70 | mA |
| - | Derating Linear From 25°C | 0.4 | 0.4 | 0.4 | mA/°C |
| Topr | Operating Temperature Range | -25°C to 85°C | | | |
| Tstg | Storage Temperature Range | -40°C to 85°C | | | |
| Lead Soldering Temperature { 1.6mm(0.063 inch) From Body } 260°C±5°C For 5 Seconds | | | | | |

ELECTRO-OPTICAL CHARACTERISTICS:(Ta=25°C)

| SYMBOL | PARAMETER | TEST CONDITION | MIN. | TYP. | MAX. | UNIT |
|--------|--------------------------|----------------|------------------|------|------|------|
| VF | Forward Voltage | IF=20mA | Ultra Red | 1.8 | 2.2 | V |
| | | | Ultra Pure Green | 3.7 | 4.0 | V |
| | | | Ultra Blue | 3.5 | 4.0 | V |
| IR | Reverse Current | VR=5V | Ultra Red | | 100 | µA |
| | | | Ultra Pure Green | | 100 | µA |
| | | | Ultra Blue | | 100 | µA |
| λD | Dominant Wavelength | IF=20mA | Ultra Red | 640 | | nm |
| | | | Ultra Pure Green | 528 | | nm |
| | | | Ultra Blue | 470 | | nm |
| Δλ | Spectral Line Half-Width | IF=20mA | Super Red | 25 | | nm |
| | | | Ultra Pure Green | 22 | | nm |
| | | | Ultra Blue | 30 | | nm |
| 2θ1/2 | Half Intensity Angle | IF=20mA | Ultra Red | 60 | | deg |
| | | | Ultra Pure Green | 60 | | deg |
| | | | Ultra Blue | 60 | | deg |
| IV | Luminous Intensity | IF=20mA | Ultra Red | 170 | | mcd |
| | | | Ultra Pure Green | 300 | | mcd |
| | | | Ultra Blue | 380 | | mcd |

